

# 串杆

CARRYING RAM

CE

## 应用范围:

主要用于带有中心孔的圆柱状货物，如钢管、盘条、钢卷板、纸卷等货物

## Applications:

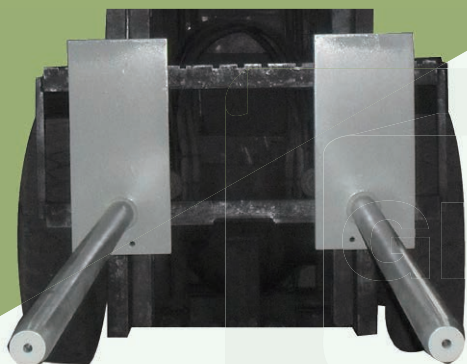
Mainly used for handling cylindrical loads with centre hole, such as steel pipe, rolled steel wire and paper roll bag.

## 产品特点:

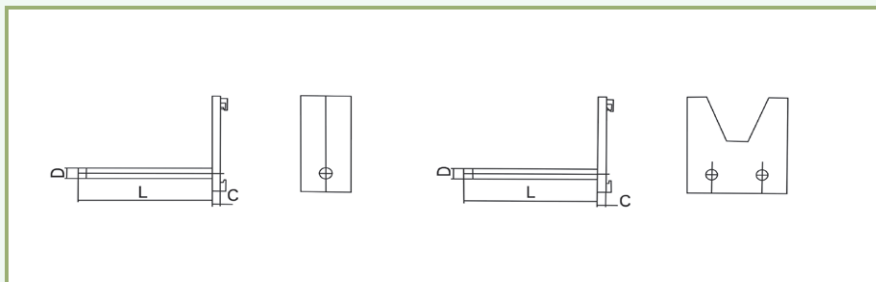
- 高强度全钢结构设计，满足用户高效率连续作业

## Features:

- Rugged all-steel construction, meet the requirements for continuous operation with high efficiency.



RIPFTA



## 单杆 *Single Rod*

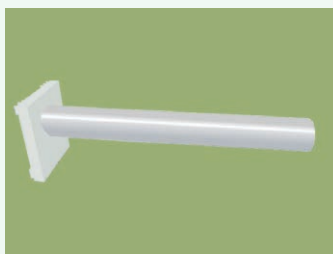
型号 Model	载荷能力/ 载荷中心 Capacity/ Load Centre (kg/mm)	杆长 Rod Length L (mm)	杆径 Rod Diameter D (mm)	失载距 Effective Thickness C (mm)
G80B20-XXB10	2000/500	根据实际情况 On Request	70	40
G80B25-XXB10	2500/500		95	60
G80B30-XXB10	3000/500		110	80
G80B40-XXB10	4000/500		120	80
G80B50-XXC10	5000/500	根据实际情况 On Request	130	100
G80B60-XXC10	6000/500		140	
G80B80-XXC10	8000/500		160	

## 双杆 *Double Rod*

型号 Model	载荷能力/ 载荷中心 Capacity/ Load Centre (kg/mm)	杆长 Rod Length L (mm)	杆径 Rod Diameter D (mm)	失载距 Effective Thickness C (mm)
G80B10-XXA20	1000/500	根据实际情况 On Request	55	40
G80B20-XXA20	2000/500		70	60
G80B20-XXB20	2000/500		70	60

注：  
以上产品型号为常用产品，可根据实际工况要求提供相应产品。

Note:  
All products as listed are standard models, custom products can be provided according to the detailed requirements.



串

杆

Carrying Ram