

圆木夹

LOG HOLDER

CE

应用范围：

主要用于搬运较长的圆柱状货物，如圆木、钢管等，广泛适用于林业、石化、管道等行业

Applications:

Designed primarily for long cylindrical loads, such as long, steel pipe.

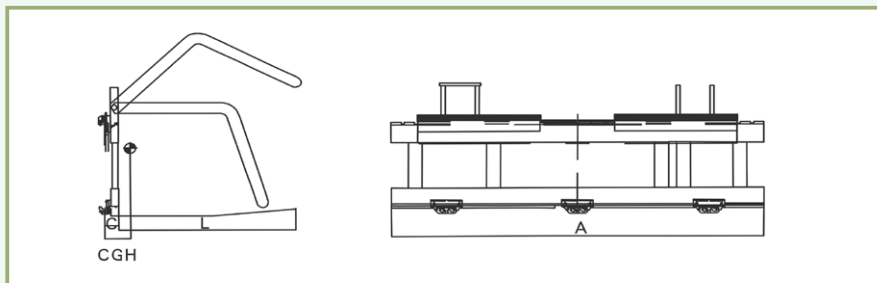
产品特点：

- 高强度全钢结构设计，满足用户高效率连续作业
- 设计合理，美观大方，采用世界上最优质的液压元件

Features:

- Rugged all-steel construction, meet the requirements for continuous operation with high efficiency.
- Reasonable design with dependable world top quality hydraulic components.



圆木夹 *Log Holder*

型号 Model	载荷能力/ 载荷中心 Load Capacity/ Load Centre (kg/mm)	横梁宽度 Frame Width A (mm)	失载距 Effective Thickness C (mm)	水平重心 Horizontal Center of Gravity CGH (mm)	自重 Weight (kg)	叉长 Arm Length L (mm)	安装 等级 Mounting Class
G28B30-220B20	3000/500	2200	160	200	720	1000	3
G28B30-220B40					750	1200	
G28B50-220C20	5000/500	2200	100	500	1050	1000	4
G28B50-220C40					1100	1200	

注:

1. 叉车需要增加2组附加油路;
2. 以上产品型号为常用产品, 可根据实际工况要求提供相应产品。

Note:

1. Two additional hydraulic circuits required on truck .
2. All products as listed are standard models, custom products can be provided according to the detailed requirements.

